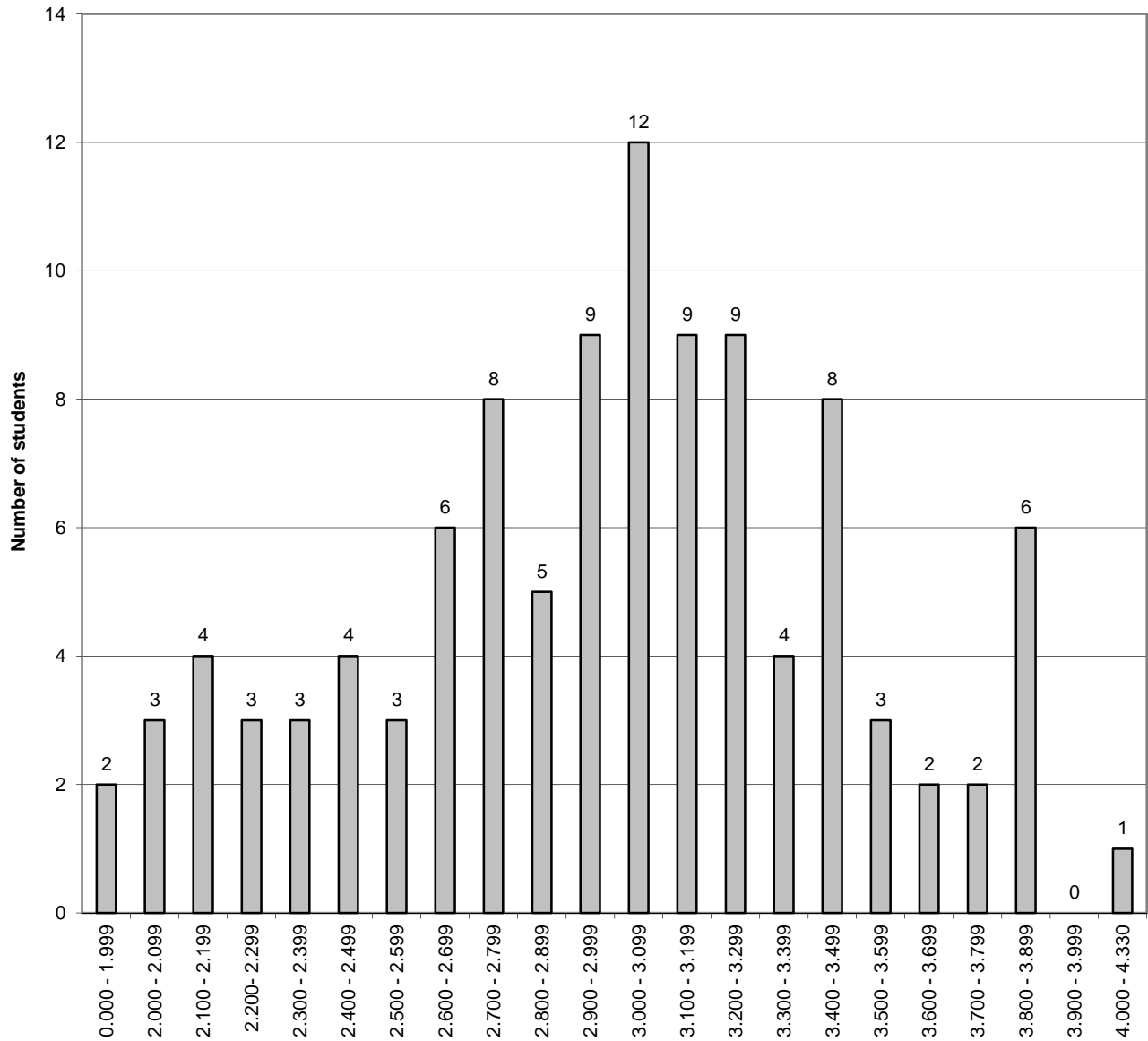


**The University of New Mexico School of Law  
Class of 2021  
Cumulative GPA Distribution (106 students) Spring Semester - 2019**



GPA - June 2019

The difference between the cumulative GPA for a student at the bottom of the top third of the class (66%-tile) and the cumulative GPA for a student at the top of the bottom third of the class (33%-tile) is .38 on a 4.33 scale.