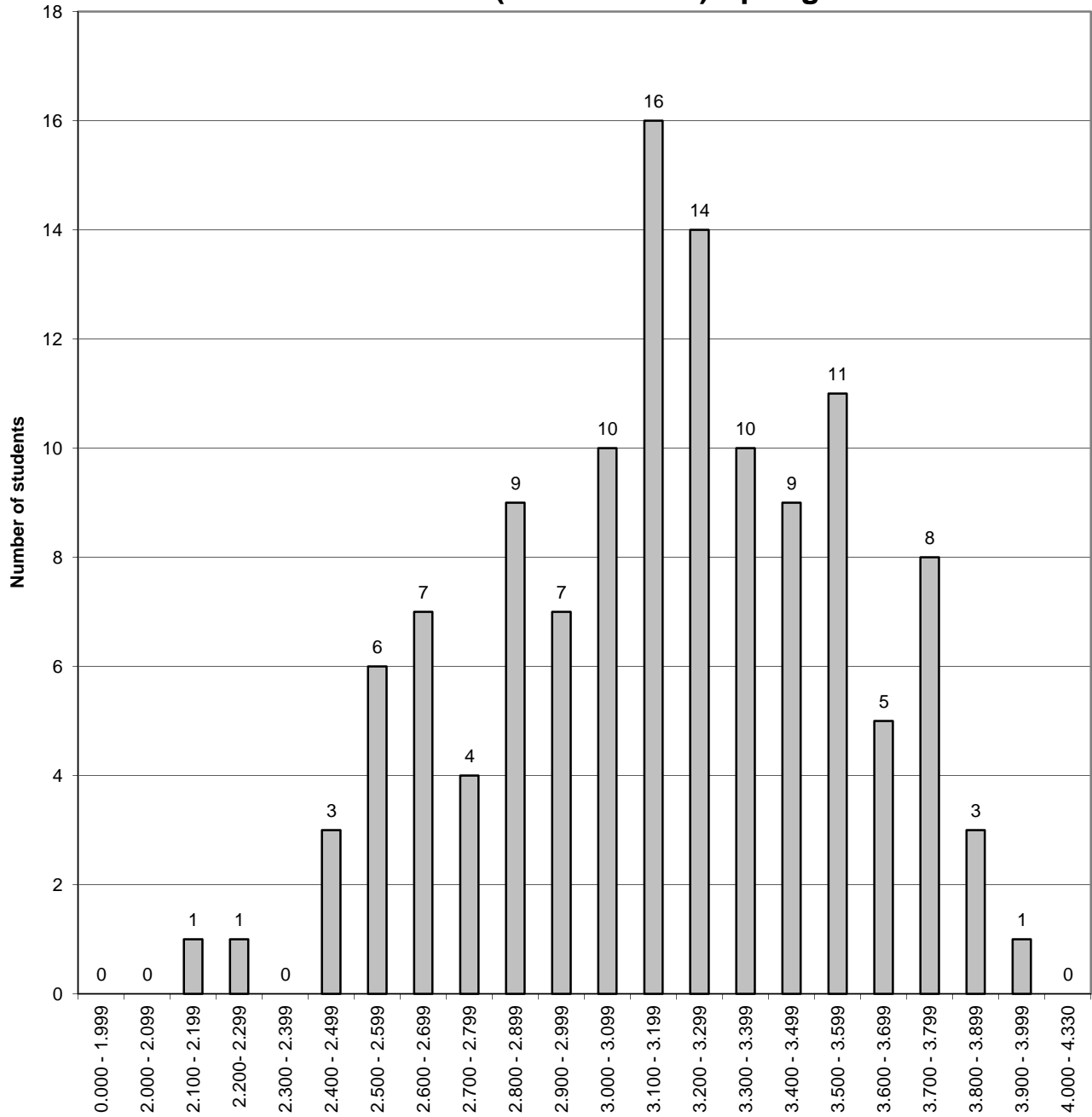


The University of New Mexico School of Law
Class of 2020

Cumulative GPA Distribution (125 students) Spring Semester-2019



GPA - June 2019

The difference between the cumulative GPA for a student at the bottom of the top third of the class (66%-tile) and the cumulative GPA for a student at the top of the bottom third of the class (33%-tile) is .33 on a 4.33 scale.