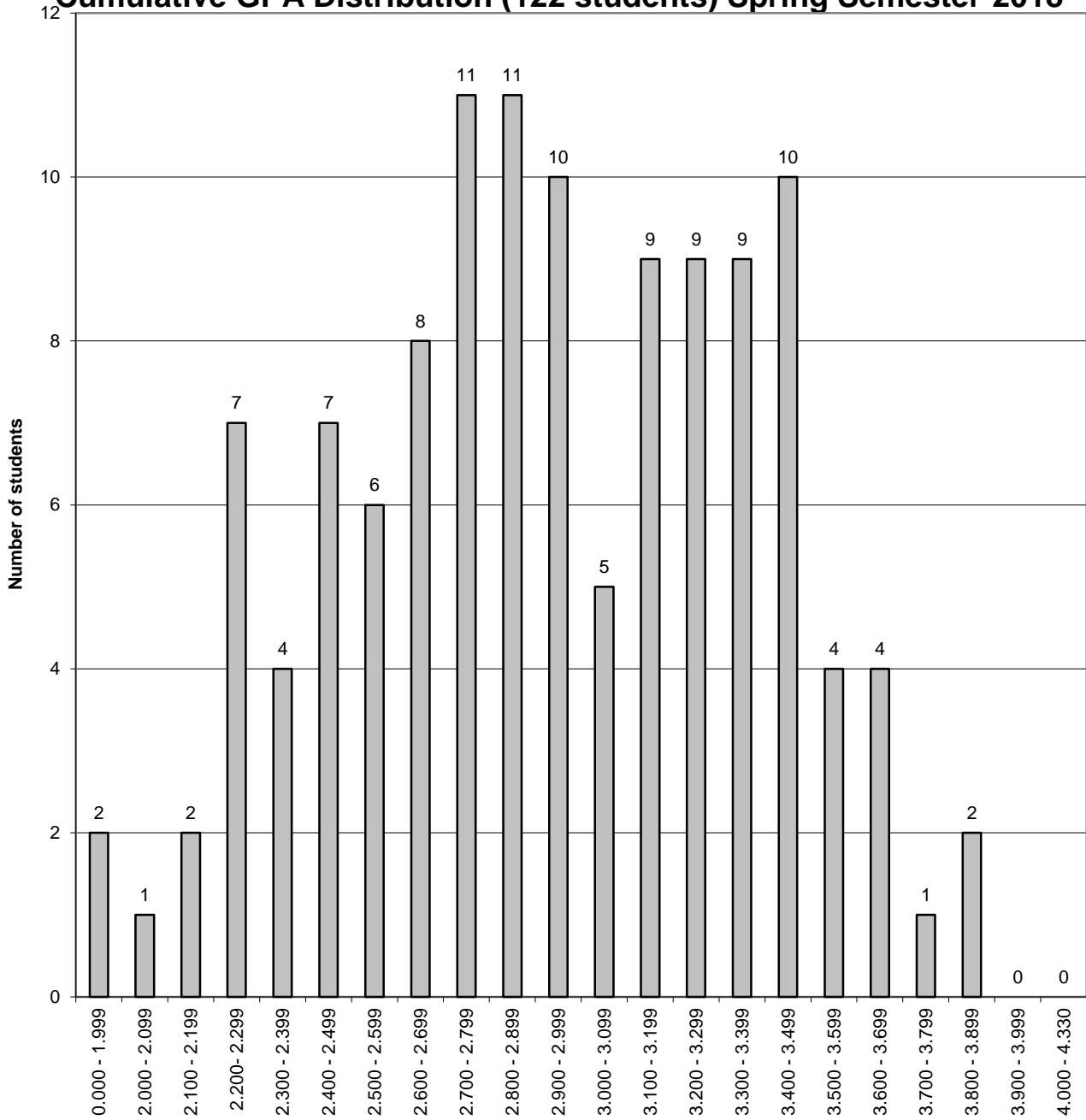


The University of New Mexico School of Law
Class of 2020

Cumulative GPA Distribution (122 students) Spring Semester-2018



GPA - June 2018

The difference between the cumulative GPA for a student at the bottom of the top third of the class (66%-tile) and the cumulative GPA for a student at the top of the bottom third of the class (33%-tile) is .41 on a 4.33 scale.