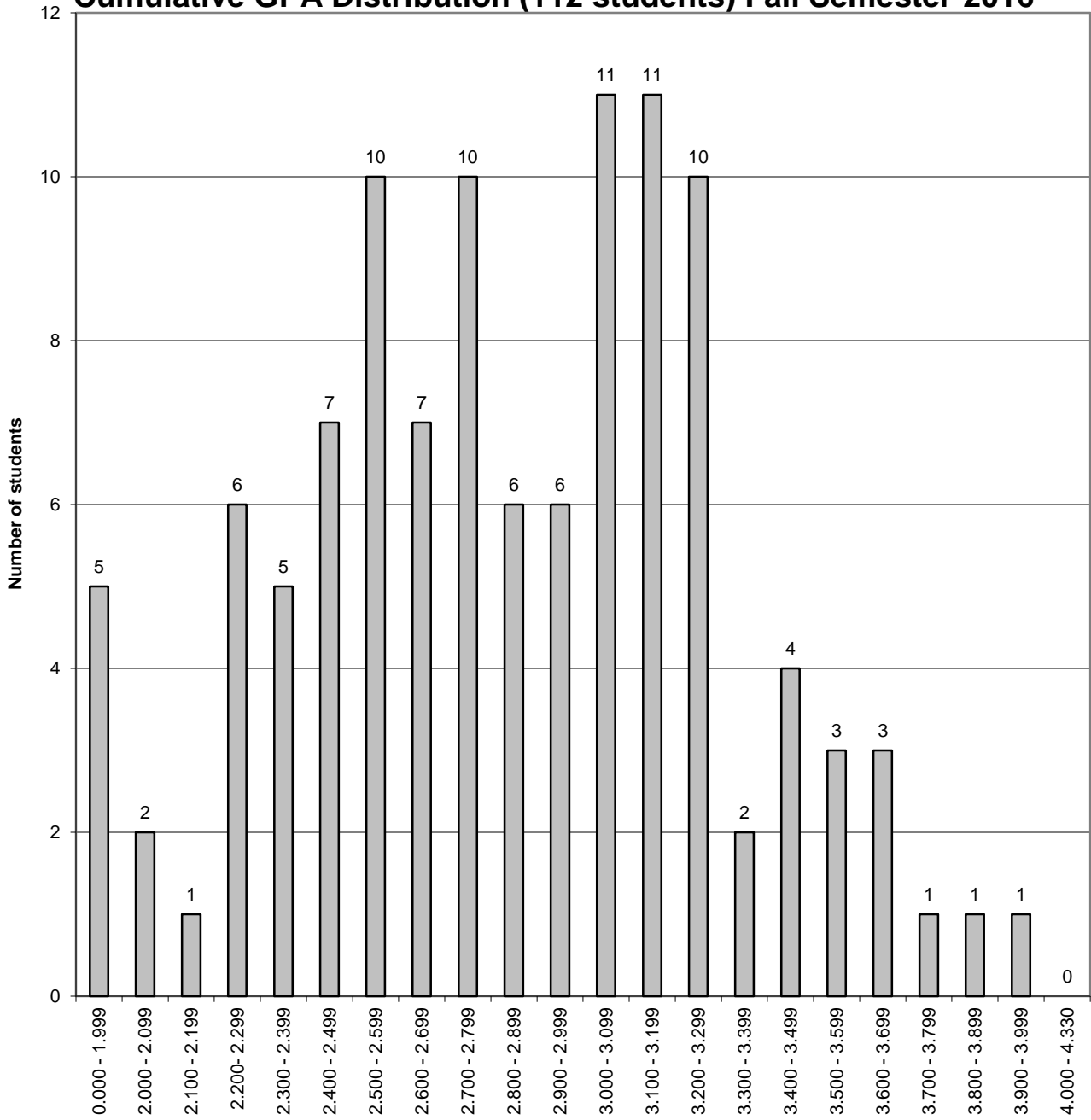


**The University of New Mexico School of Law  
Class of 2019**

**Cumulative GPA Distribution (112 students) Fall Semester-2016**



GPA - January 2017

The difference between the cumulative GPA for a student at the bottom of the top third of the class (66%-tile) and the cumulative GPA for a student at the top of the bottom third of the class (33%-tile) is .45 on a 4.33 scale.