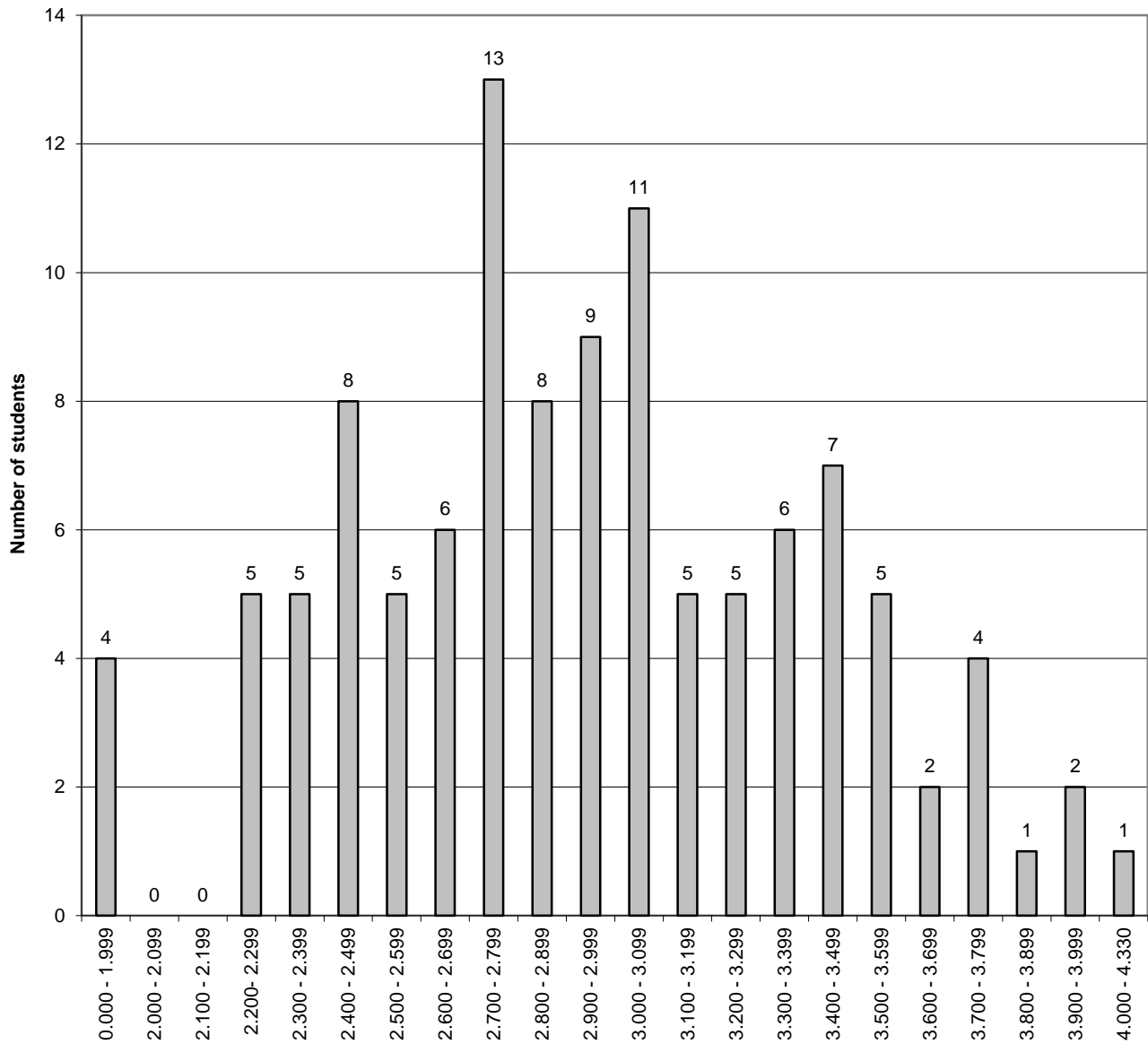


**The University of New Mexico School of Law
Class of 2017
Cumulative GPA Distribution (112 students) Spring Semester - 2015**



GPA - June 2015

The difference between the cumulative GPA for a student at the bottom of the top third of the class (66%-tile) and the cumulative GPA for a student at the top of the bottom third of the class (33%-tile) is .40 on a 4.33 scale.