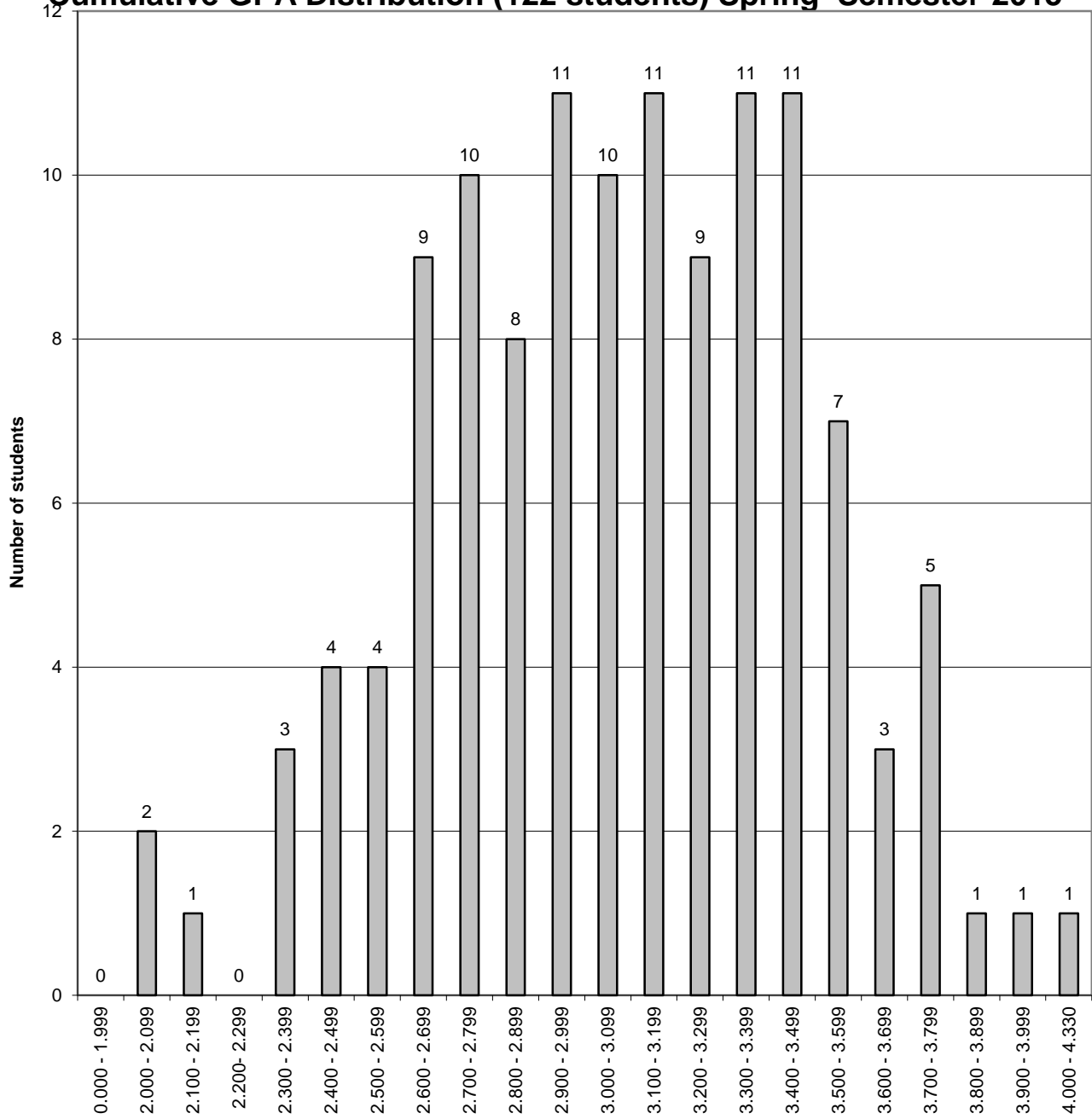


**The University of New Mexico School of Law  
Class of 2016**

**Cumulative GPA Distribution (122 students) Spring Semester-2015**



GPA - July 2015

The difference between the cumulative GPA for a student at the bottom of the top third of the class (66%-tile) and the cumulative GPA for a student at the top of the bottom third of the class (33%-tile) is .33 on a 4.33 scale.