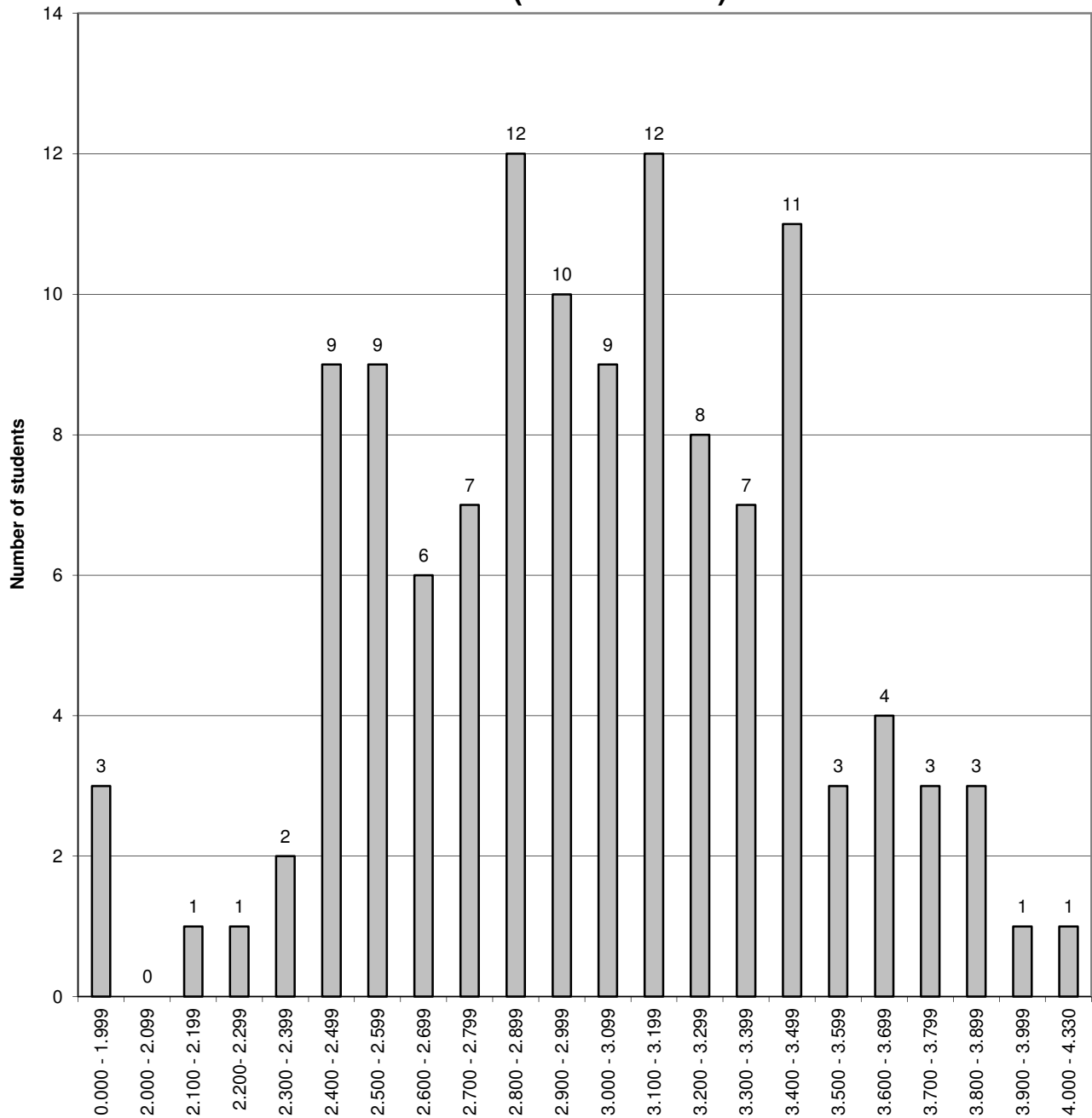


The University of New Mexico School of Law
Class of 2016

Cumulative GPA Distribution (122 students) Fall Semester-2014



GPA - January 2015

The difference between the cumulative GPA for a student at the bottom of the top third of the class (66%-tile) and the cumulative GPA for a student at the top of the bottom third of the class (33%-tile) is .39 on a 4.33 scale.