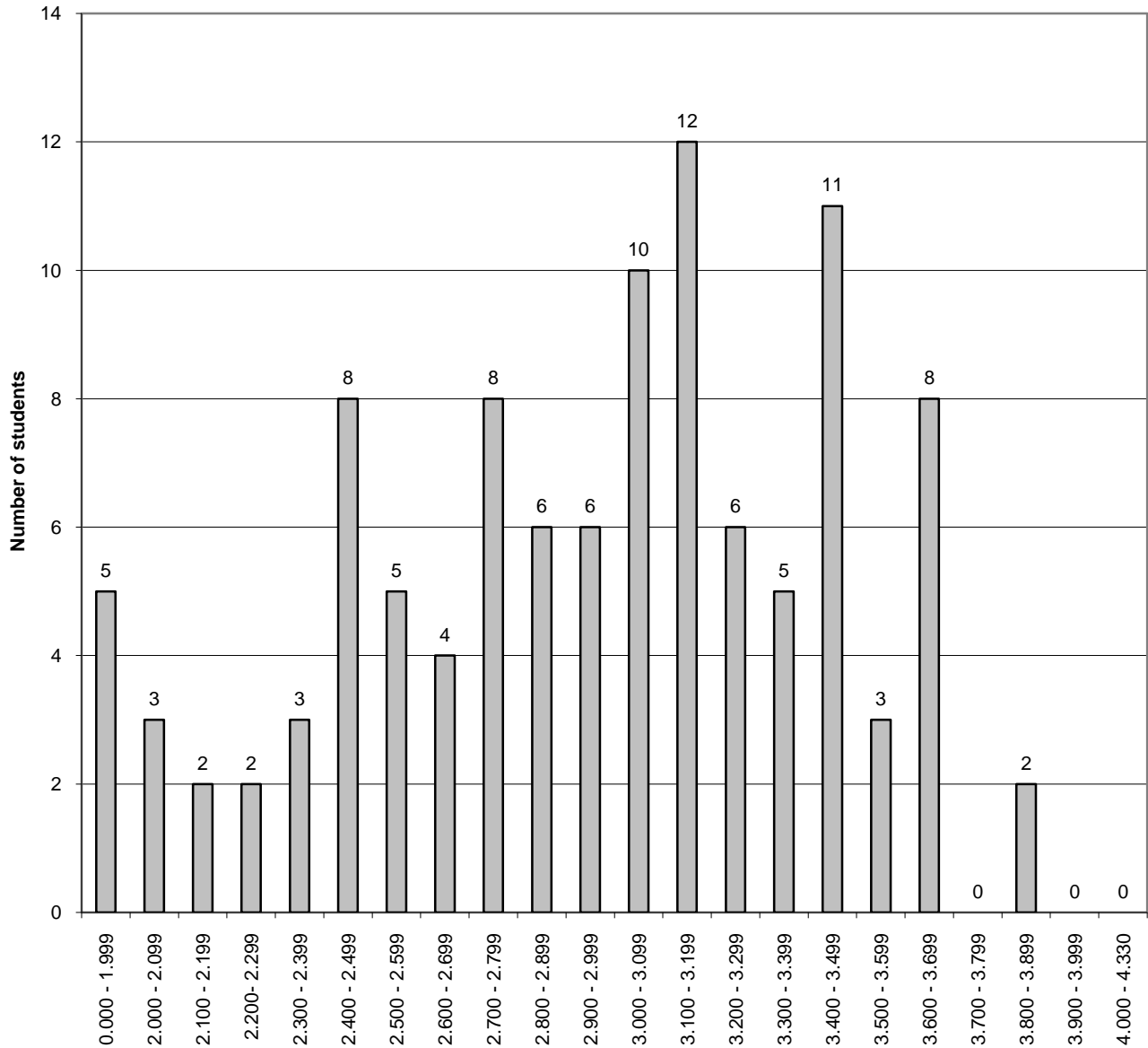


**The University of New Mexico School of Law  
Class of 2014  
Cumulative GPA Distribution (109 students) Spring Semester - 2012**



GPA - May 2012

The difference between the cumulative GPA for a student at the bottom of the top third of the class (66%-tile) and the cumulative GPA for a student at the top of the bottom third of the class (33%-tile) is .41 on a 4.33 scale.