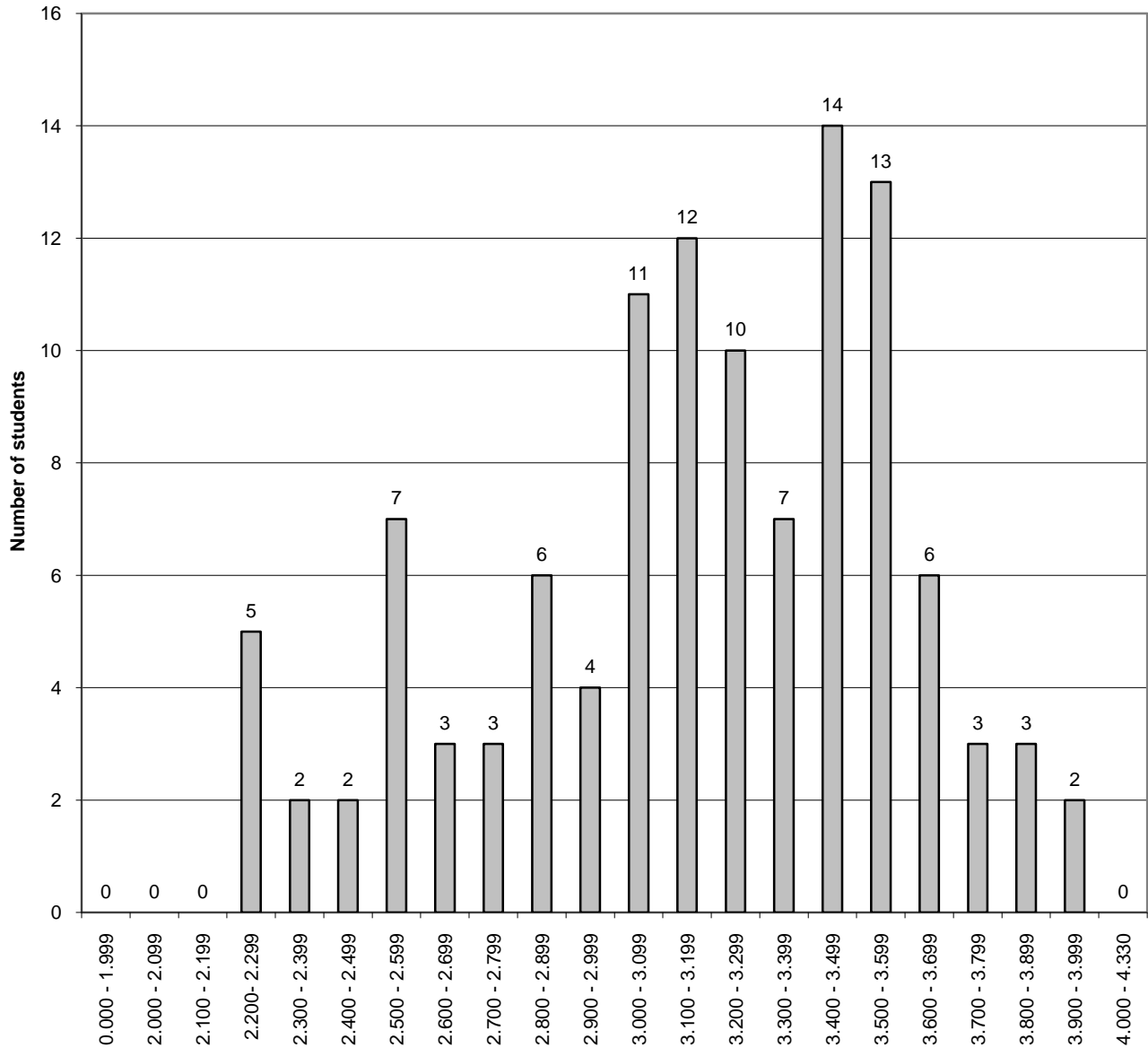


**The University of New Mexico School of Law
Class of 2014
Cumulative GPA Distribution (113 students) Fall Semester - 2013**



GPA - December 2013

The difference between the cumulative GPA for a student at the bottom of the top third of the class (66%-tile) and the cumulative GPA for a student at the top of the bottom third of the class (33%-tile) is .42 on a 4.33 scale.