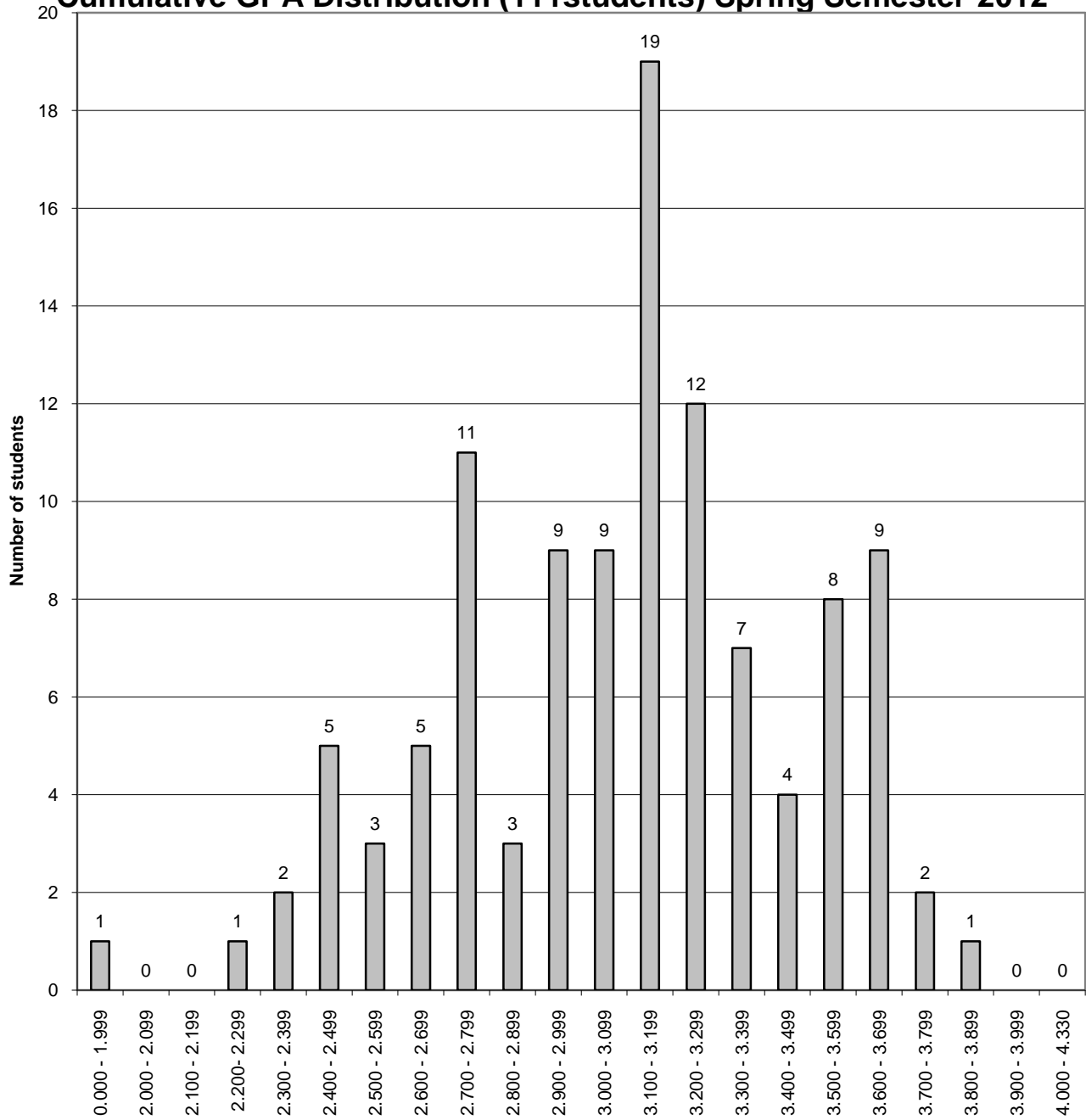


**The University of New Mexico School of Law
Class of 2013**

Cumulative GPA Distribution (111students) Spring Semester-2012



GPA - May 2012

The difference between the cumulative GPA for a student at the bottom of the top third of the class (66%-tile) and the cumulative GPA for a student at the top of the bottom third of the class (33%-tile) is .24 on a 4.33 scale.