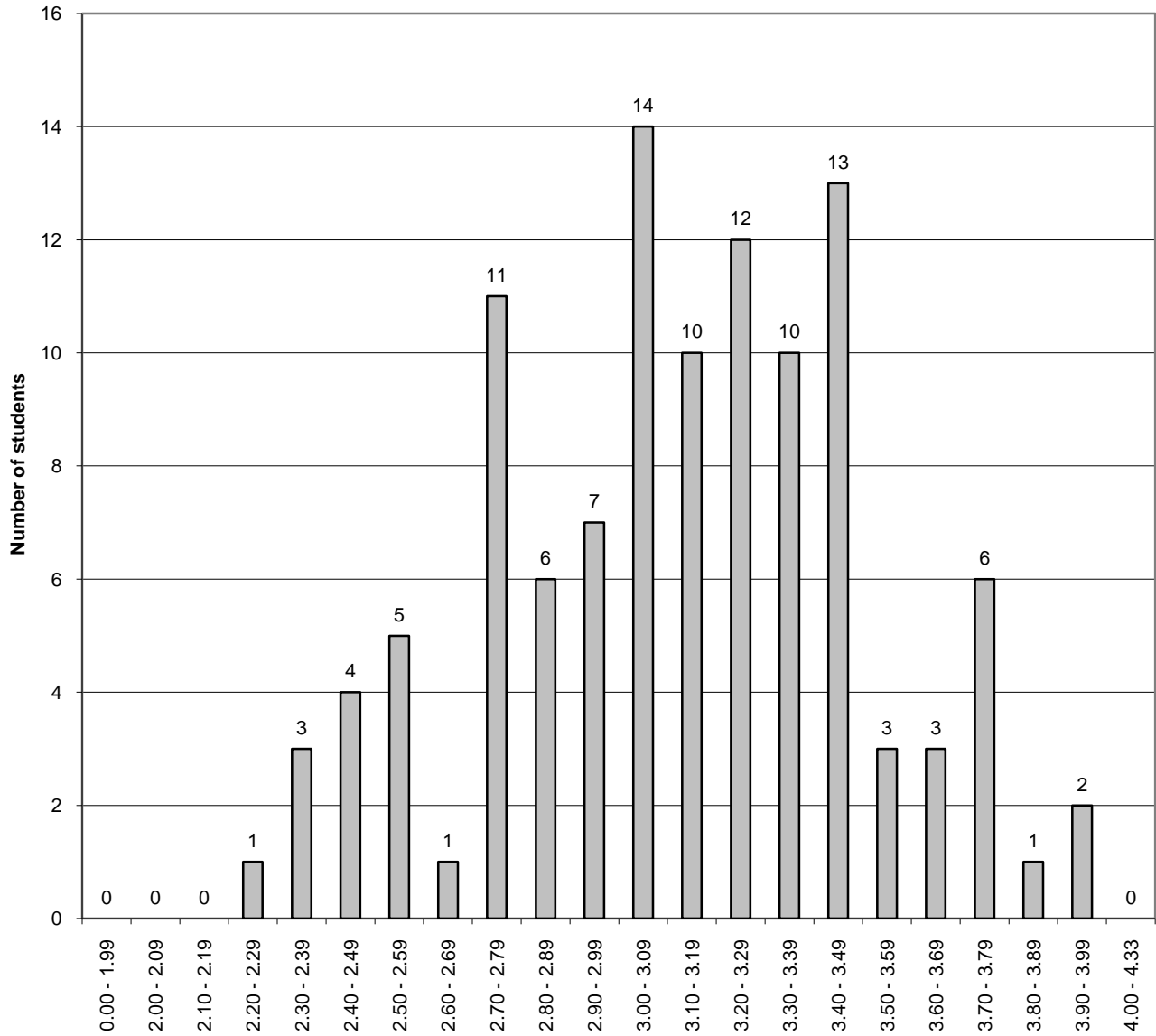


## Class of 2010 Cumulative GPA Distribution (112 students) Fall Semester - 2009



GPA - Dec. 2009

The difference between the cumulative GPA for a student at the bottom of the top third of the class (66%-tile) and the cumulative GPA for a student at the top of the bottom third of the class (33%-tile) is .31 on a 4.33 scale.