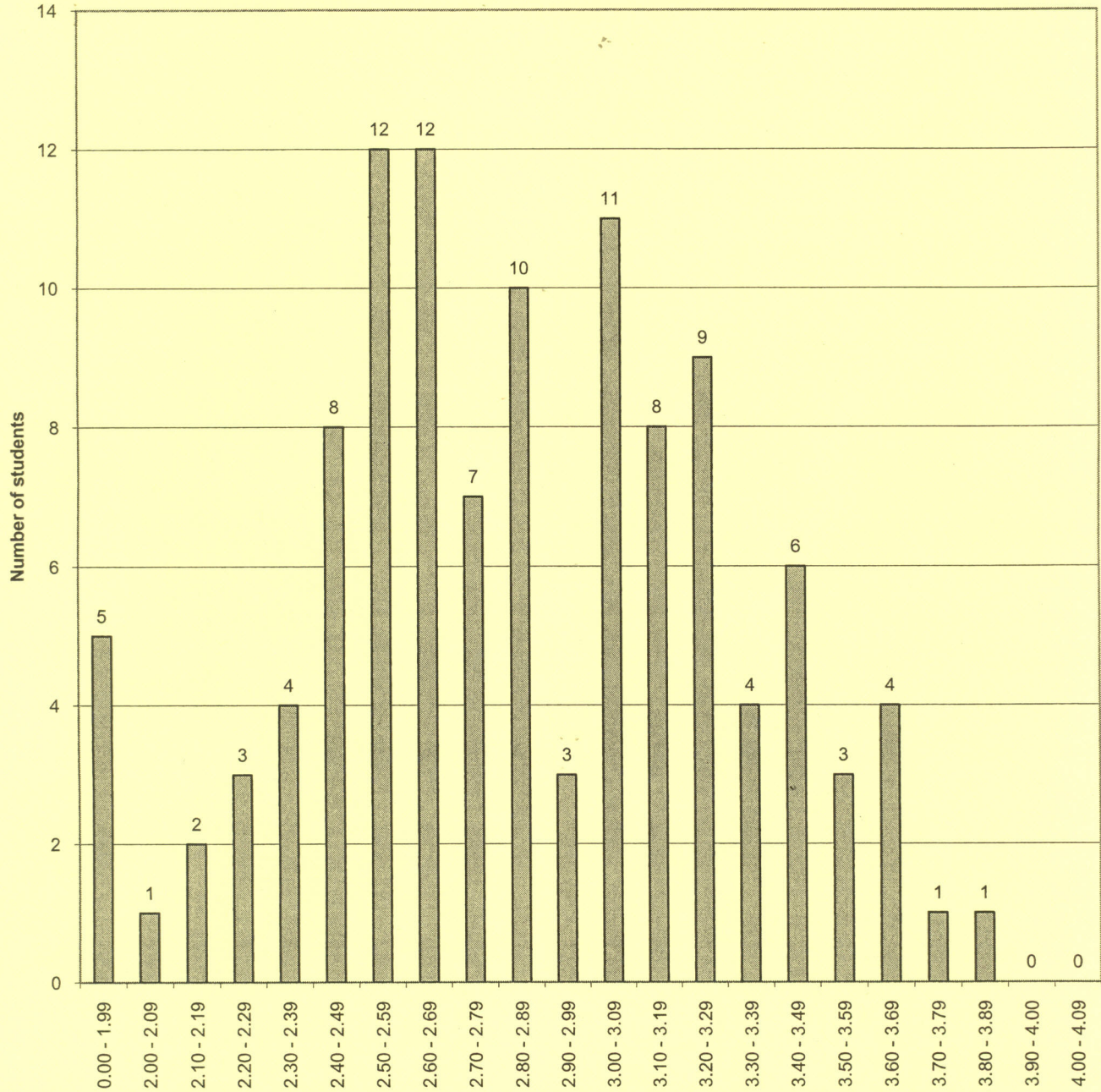


**Class of 2011
Cumulative GPA Distribution (114 students) Fall Semester-2008**



GPA - Dec. 2008

The difference between the cumulative GPA for a student at the bottom of the top third of the class (66%-tile) and the cumulative GPA for a student at the top of the bottom third of the class (33%-tile) is .48 on a 4.33 scale.