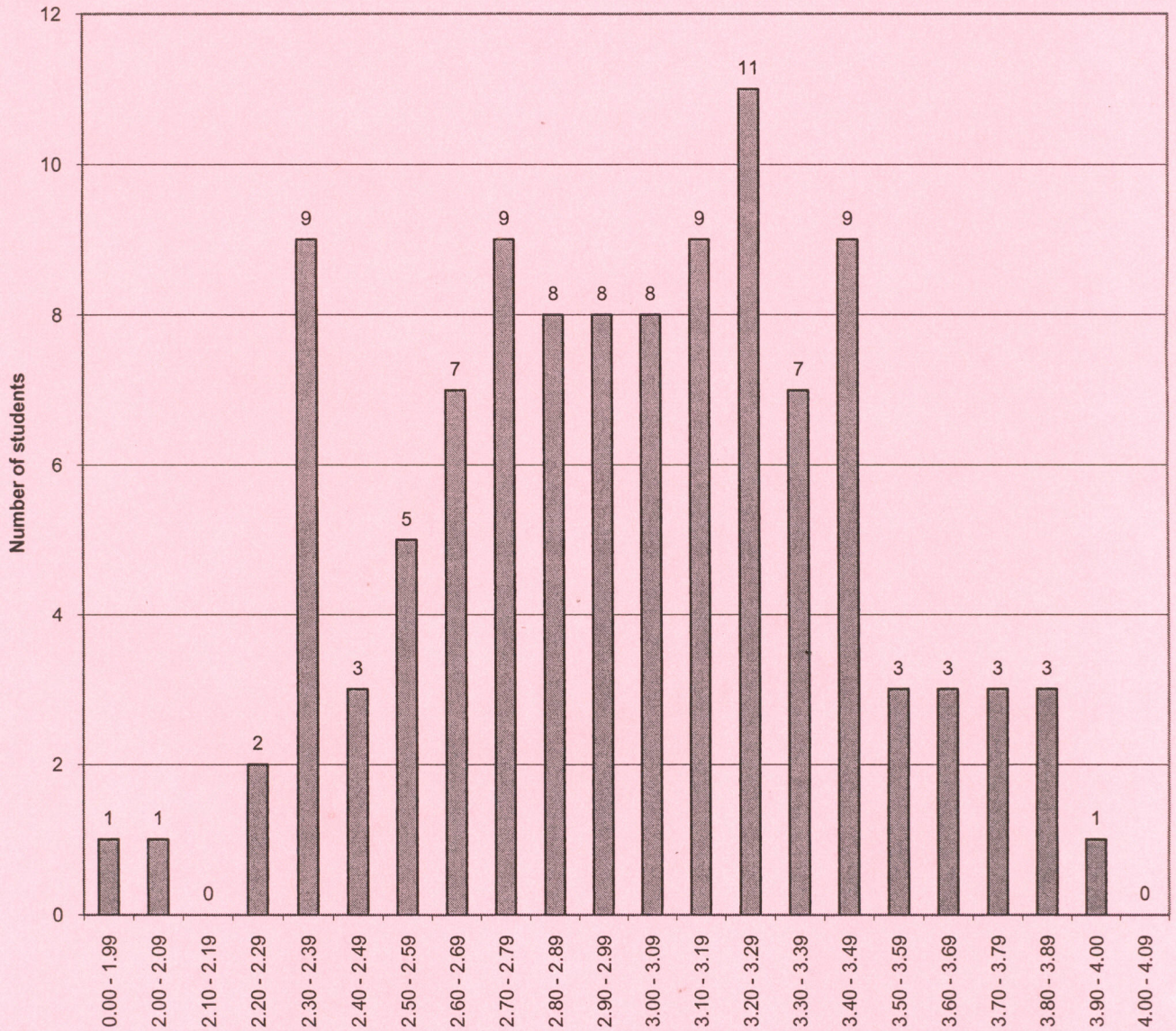


**Class of 2010
Cumulative GPA Distribution (110 students) Fall Semester - 2008**



GPA - Dec. 2008

The difference between the cumulative GPA for a student at the bottom of the top third of the class (66%-tile) and the cumulative GPA for a student at the top of the bottom third of the class (33%-tile) is .43 on a 4.33 scale.